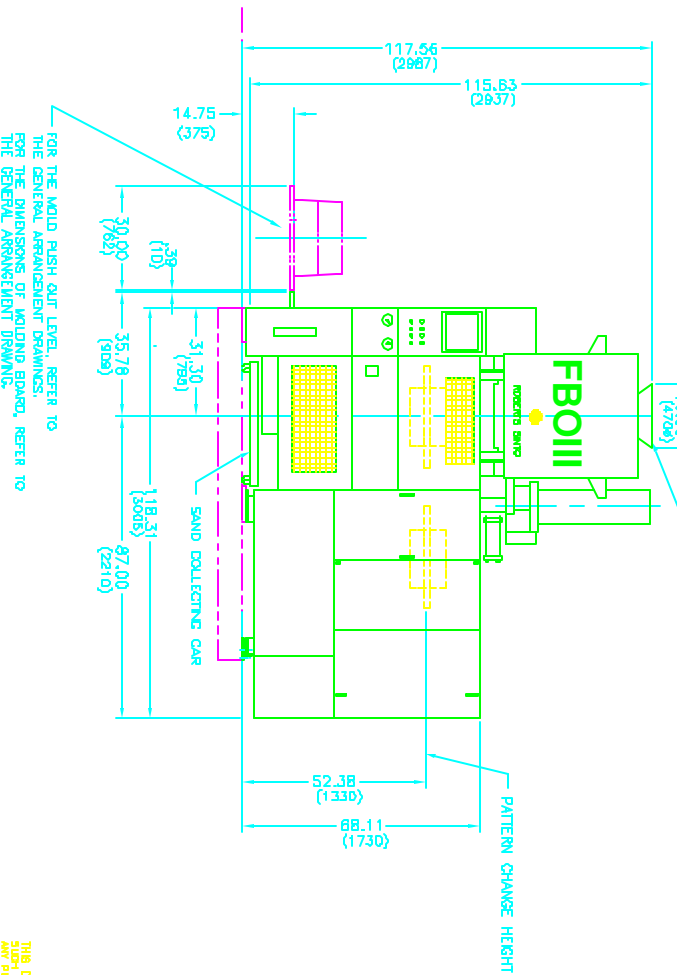
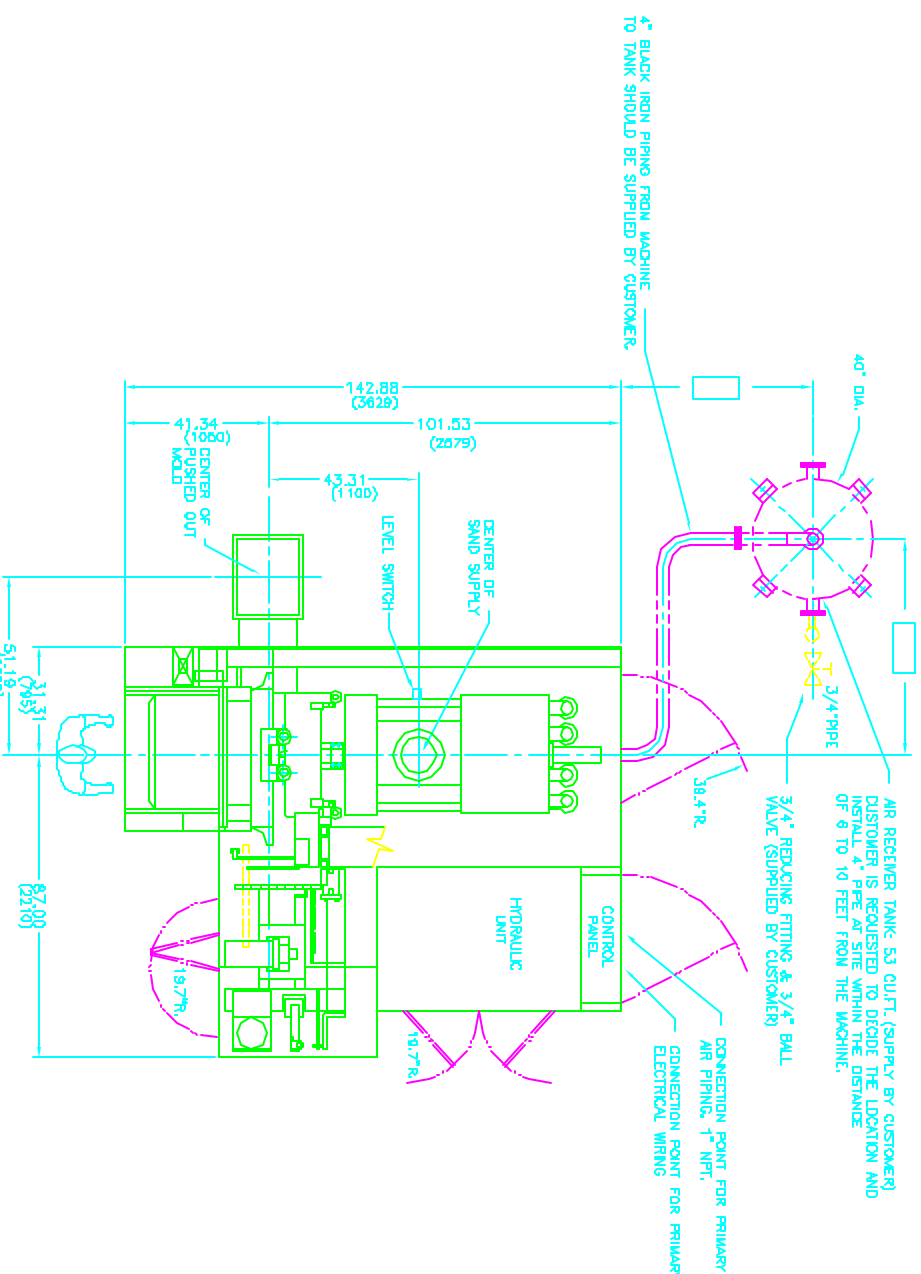
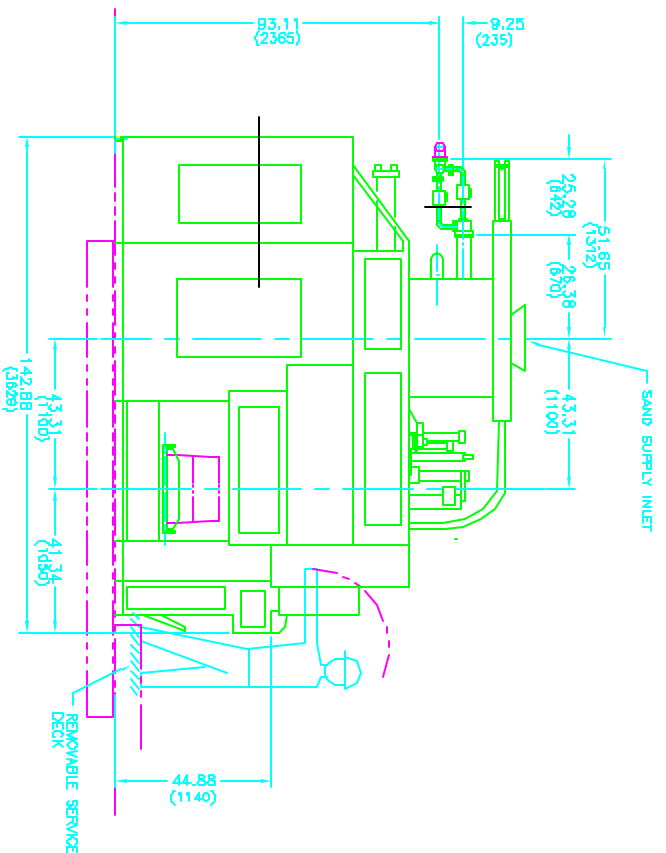


SPECIFICATIONS

NAME	HORIZONTALLY PARTED FLASHLESS TYPE MOLDING MACHINE
TYPE	FB0-III R (UH ELECT)
MOLD SIZE	24" x 20" (610 X 508 mm)
H.T.	COPE 5.1" - 7.9" (130-200mm) DRAG 5.1" - 7.9" (130-200mm) (INDEPENDENTLY ADJUSTABLE FROM OPERATORS PANEL)
MOLDING METHOD	TOP BLOW & SQUEEZE
MOLDING SPEED MAX	30 SEC./MOLD (NOT INCLUDING CORE SETTING) 120 MOLDS/HR
SQUEEZE PRESSURE	142 PSI (98.160 LBS) (10 kg/cm ²)
DRIVE METHOD	3 PRESSURE SELECTIONS
AIR CONSUMPTION	AIR & HYDRAULIC (25 HP-HYD) <input type="checkbox"/> AIR <input type="checkbox"/> WATER COOLED 42 CFT/PER MOLD (1.2 NM ³ PER MOLD)
WORKING AIR PRESSURE	80 ±6 PSIG (5.6 ±0.4 KG/CM ²)
CONTROL METHOD	PLC
POWER SUPPLY	480 V, 3-PHASE, 60HZ (OPERATION 100V)
MOLD WEIGHT	410 lb (186kg)
PAINTING	MACHINE - MUNSELL N-8 WHITE PANEL - MUNSELL N-8 WHITE
MACHINE WEIGHT	28,800 LBS. (12,973 KG.)
ACCESSORIES	STANDARD SPRUE CUP/SPRUE ROD #30 (1 SET) MASTER PLATE (FOR STD. PATTERN PLATE) SQUEEZE BOARD HEATER (COPE & DRAG) 100V/200W(2 SETS) DRAG MOLD BLOW OFF
AVAILABLE OPTIONS	<input checked="" type="checkbox"/> PATTERNS <input type="checkbox"/> PATTERN HEATER 100V X 650W <input type="checkbox"/> PATTERN VIBRATOR <input type="checkbox"/> PATTERN ADAPTER/MASTER PLATES <input type="checkbox"/> VARIOUS SPIRLE PIN/CUP DIAMETERS <input type="checkbox"/> AIR OR WATER COOLED HYDRAULIC UNIT <input type="checkbox"/> FOUNDATION FRAME <input type="checkbox"/> AIR RECEIVER TANK (53 CU FT) <input type="checkbox"/> AUTOMATIC CORE SETTER

ITEMS TO BE PREPARED BY CUSTOMER

1. AIR RECEIVER TANK (FOR BLOWING)	53 CU FT. 4" PIPE, 3/4" APPROX. VALVE & BALL VALVE AS APPROVED 1 SET
2. HYDRAULIC WORKING OIL	(WEAR RESISTANT HYDRAULIC OIL) ISO VG 46, 100 GAL.
3. PATTERN PLATE (REFER TO THE REF. DRAWING)	25mm(20-30) THICK ALUMINUM PLATE 1 SET
4. PRIMARY AIR PIPING	PIPE DIAMETER 1", 3/4" 1 SET
5. PRIMARY ELECTRIC WIRING AND GROUND WIRE	AC 480V, 60HZ, 18KW AND 120V, 60HZ, (FOR PATTERN HEATER) 1 SET
6. MIXED SAND SUPPLY UNIT	1 SET
7. SERVICE DECK (FOR CORE SETTING)	1 SET
8. FOUNDATION FRAME FOR MOLDING MACHINE SUPPORTING UNIT	1 SET
9. AUXILIARY PLATE (FOR EXISTING PATTERN PLATE)	1 SET (REFER TO THE REFERENCE DWG.)
10. HOIST FOR REPLACING MASTER PLATE	1 SET (FOR APPROX. 440 LBS.)



FOR THE MOLD PUSH OUT LEVER, REFER TO THE GENERAL ARRANGEMENT DRAWING. FOR THE GENERAL ARRANGEMENT OF MOLDING BOARD, REFER TO THE GENERAL ARRANGEMENT DRAWING.

THIS DOCUMENT CONTAINS PROPRIETARY INFORMATION AND ANY UNLAWFUL USE OR DISCLOSURE OF THIS INFORMATION WITHOUT THE WRITTEN PERMISSION FROM ROBERTS-SINTO CORPORATION.

NO.	REVISIONS	DATE	BY
1	UPDATED	4/98	DJ
2	UPDATED	10/97	TC
3	WAS 700 MM WIDE MOLD CAR	9/99	DJ



ROBERTS SINTO CORPORATION
2345 W. 10th Street • 16th St. SW
Grand Rapids, MI 49506

DESIGNED BY	APPROVED BY	DATE
RS	RS	1-30-95